



ABTCO
VINYL SIDING



ABTCO® Premium Vinyl Sidings

Beauty

Colour

Performance

Ease





Picking the right siding colour, style and design is about to get easier.

Relax, you've got all you need right now, at Home Depot®!

This brochure will be the start of your exciting remodeling journey. As you page through all the options you have in the ABTCO line, make notes of woodgrain patterns you like, siding profiles you feel will bring out the best in your house, and then narrow down the colours to a few you think will work in your neighborhood. Then bring your wish list back into the siding experts at Home Depot. They have come to trust ABTCO vinyl siding products to deliver a very broad offering of low-maintenance sidings and accessories for years and years. That confidence easily translates down to you, as you stare up at the huge wall of siding products and colours at your local Home Depot store. There's something for every home style and budget.



Keeping your ABTCO vinyl siding looking new is as simple as a little soap and a squirt from the garden hose from time to time.



SPECTRASHIELD

Armor for your home.

Market Trends

Designers and industry experts predict that the most popular colour trends for home exteriors are dark, bold colours.

Intense heat from the sun's rays can take a toll on the exterior of your home. This can cause panels to distort and fade. Darker colours present an even bigger challenge because they absorb more of the sun's damaging rays. ABTCO's research and development team aggressively tested dark coloured vinyl siding in laboratories and field tests, in order to combat these issues.

Being at the forefront of the industry, ABTCO is pleased to introduce **SpectraShield™** Technology to enhance overall product performance. The results prove that its unique properties and heat resistance capabilities are ideal for these new colour trends.

Protects Against Heat Distortion

Spectrashield™ thermal diffusion agents protect vinyl siding against distortion caused by the heat from the sun.



Heat gun pointed at Abtco vinyl siding at a temperature of 176.5 F. No distortion from the intense heat



Heat gun pointed at competitor's vinyl siding at a temperature of 176.5 F. Siding tends to deform in the heat.

Chromalock™ will Protect from Fading

ChromaLock™ thermal diffusion agents disperse the sun's intense heat to resist fading, keeping your house looking beautiful year after year.





Richmond

The Vinyl Siding that Stands Out Among the Rest as the Best.

- The time honored tradition of 6" lap siding in ultra durable vinyl.
- Classic beauty, long lasting elegance.
- Subtle realistic woodgrain molded from real cedar planks.
- Available in rich saturated craftsman tones and perfectly matched trims.
- Premium strength and impact resistance.
- Limited lifetime warranty on substrate and finish, plus 25 years fade resistance warranty.

Richmond^{ULTRA}

Where Style and Science Meet

The exterior of your home is an expression of your style but equally as important is that the beauty lasts. ABTCO offers the ultimate in style and science in the Richmond Ultra™ Collection. Richmond Ultra™ is designed to always look incredible and deliver protection and comfort year after year.

Richmond Ultra™ brings together quality insulation and vinyl siding using our patent-pending mechanical fastening system, a revolutionary system allowing the vinyl and foam to function independently to expand and contract freely as outside temperatures change. The system design maintains the structural integrity and resists warping and bowing, keeping your siding smooth and straight for years. Richmond Ultra™, unparalleled Beauty, Protection, Durability and Ease.



White	Classic Linen	Heritage Gray
Sandstone	Khaki	Pecan
Clay	Sage	Evergreen
Spice	Brick	Umber
Slate Blue	Charcoal	Cobalt

Manufactured with

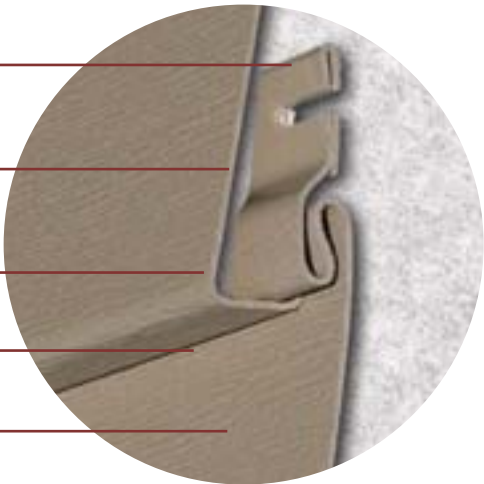


Double-thick Cyclone-System™ nail hem for extra rigidity and wind resistance.

Premium 0.050" thickness for exceptional impact resistance.

Full 3/4" profile provides dramatic shadow lines.

Chromalock™ vinyl technology locks-in colour.

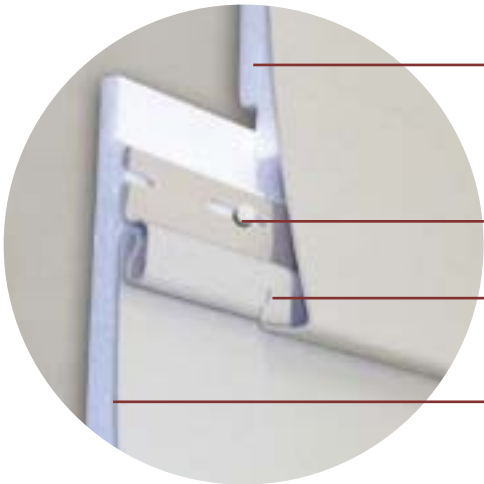


Extra thick paneling and insulation keeps air and insects out and its superior insulation keeps your home warm in the winter and cool in the summer.

Mechanical fastening system allows for a more resilient insulated siding that protects your home from extreme weather conditions.

Self-aligning locking system is designed to snap together for extra fastening strength.

Premium 0.050" thickness and double sized insulated panels reduce noise by up to 30%.



White	Tan
Sandstone	Clay
Cobblestone	Khaki
Classic Linen	Heritage Gray



Harbor Ridge™ Vinyl Siding

The deep woodgrain.
The extra attention
to every detail.
You can tell from a
distance that this is a
top-of-the-line siding.

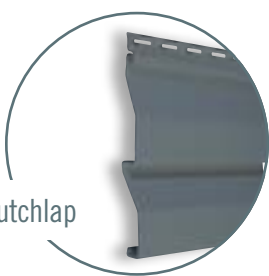
Give your house the richness it
deserves with Harbor Ridge.

When you want the look of real wood
and the resiliency of premium vinyl siding,
consider Harbor Ridge™. Calibrated
to a full .044" thickness, Harbor Ridge
vinyl siding's excellent impact and wind
resistance complements the textured
woodgrain for a unique blend of high-
performance and artistic beauty. Available
in two profiles and a range of colours,
Harbor Ridge vinyl siding provides a
beautiful and durable alternative to wood.

Harbor Ridge and Harbor Ridge Plus are
available in two versatile profiles to give
you more options.



Double 4"



Double 4" Dutchlap

Harbor Ridge Colours*

White	Prairie Wheat	Antique Ivory	Almond	Tan
Sand	Sandstone	Cobblestone	Clay	Khaki
Classic Linen	Heritage Gray	Gray	Slate Blue	Slate

All colours not available in all profiles. Please check availability.

Printed colours may vary from actual siding color. Please make a final colour selection from siding samples.



Harbor Ridge™ Plus Vinyl Siding

Why Harbor Ridge™ Plus Siding?

- Using ColourFast™ Technology, non-reactive acrylic is fused to our premium vinyl compounds, providing fade resistant protection we warrant for 25 years.
- Our unique Insta-Lock™ panel locking system means a quick, easy, secure installation.
- Harbor Ridge siding's deep lap profile provides enhanced beauty and increased installation rigidity.
- Our VaporVent™ weep hole system helps prevent water molecules from becoming trapped behind the siding in cold or humid conditions.
- Compatible accessories are available to help you finish the job right.
- Harbor Ridge siding is calibrated to .044" thickness and offers excellent impact resilience and wind resistance.
- Deeply textured wood grain and rich satin finish provide the classic glow of freshly painted wood.

Textured woodgrain
appearance

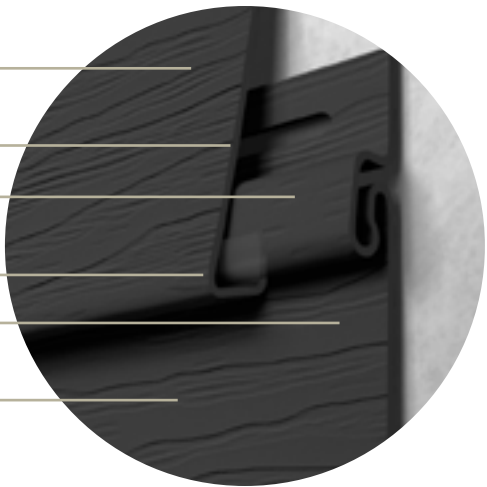
.044" thickness

LineLock™
panel locking system

1/2" lap profile

Vapor Vent™
weep hole system

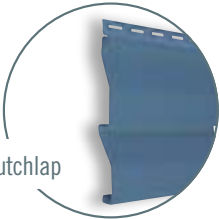
UV inhibitors



Make your whole house low-maintenance!

We want to completely take the drudgery out of home maintenance. We've designed all the necessary components to cover your entire home in low-maintenance vinyl.

There are vinyl soffits that come in many designs and widths, with special venting perforations that help the necessary exchange of air and moisture. We've engineered special window and door trims that do a great job of protecting your house and looking just like wood trim at the same time. Most of these accessories and trims come in a broad variety of colours to match your siding exactly, or provide a nice architectural statement in a contrasting shade. Ask your Home Depot team member for information on all your options.



Double 4" Dutchlap



Double 4"

Harbor Ridge Plus Colours

Spice	Cabot Red	Cabot Brown	Cabot Ivy
Cabot Blue	Castlemore	Manor	

Manufactured with



Printed colours may vary from actual siding color. Please make a final colour selection from siding samples.



Harbor Ridge™ Rustic Vinyl Siding

Have you always longed for a home with hand-stained cedar or redwood, but knew it would be nothing but continuous maintenance?

Now there's a low-maintenance option. With a lifetime limited warranty to boot. For the authentic look of stained cedar siding, with none of the drawbacks of aged wood, consider Harbor Ridge Rustic™ vinyl siding. Calibrated to a full .044" thickness, and artistically designed with a random, stained wood grain appearance, Harbor Ridge Rustic siding successfully combines premium durability with extraordinary realism. Available in two profiles and a range of colours, Harbor Ridge Rustic siding offers a beautiful and durable alternative to wood.

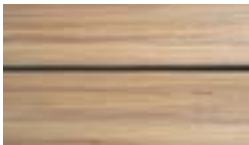
Harbor Ridge Rustic™ is available in 2 distinct profiles to add character to any home.



DOUBLE 4



DOUBLE 5 DUTCHLAP



Vermont Maple



Natural Oak



Cherry



Weathered Wood



River Rock



Cypress



Deeply textured woodgrain appearance of stained cedar siding

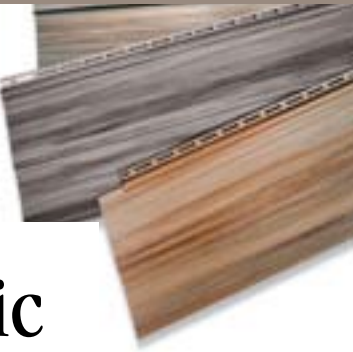
.044" thickness

LineLock™ panel locking system

1/2" lap profile

Vapor Vent™ weep hole system

UV inhibitors



Majestic

You are living life in vivid colour, embracing all that it has to offer and you want the world to know it.

The Majestic Collection, with its bright vibrant colours, is the perfect match. Show the neighborhood your personality, fearless and loving every moment. **Be Bold, Be Majestic**

The Majestic Collection, featuring our Spectrashield™ Technology, combines the perfect choice of bright, vivid colours and a unique woodgrain, creating a breathtaking effect. This stunning, vibrant colour palette was carefully selected by our design team alongside architects; these bold colours will be trending throughout the years. The pop of colour offered by our Majestic Collection will surely grab attention! Illuminate your home with extraordinary colour!



Golden Honey



Autumn Harvest



Boulder Gray



Urban Blue



Java Brown



Tundra



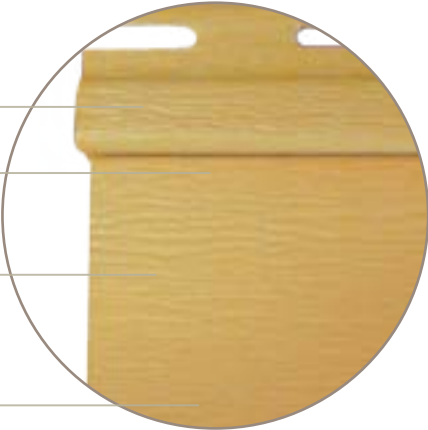
Majestic is available in D4 and D4D

Textured woodgrain appearance

.044" thickness

Rich vibrant colours

Exclusive ChromaLock formulation



Manufactured with



Printed colours may vary from actual siding color. Please make a final colour selection from siding samples.

Printed colours may vary from actual siding color. Please make a final colour selection from siding samples.



TimberCrest[®] *plus*

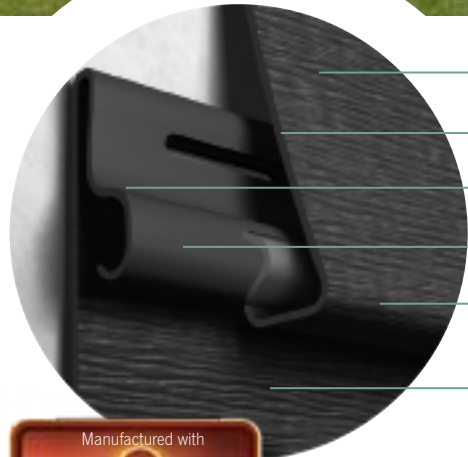
Vinyl Siding

Have you ever seen colours this rich in a low-maintenance siding?



Your neighbors will think it's painted rough-sawn cedar.

Using the latest in colour preservation technology, TimberCrest[®] Plus siding adds a whole range of darker colours to your spectrum of choices. TimberCrest Plus vinyl siding is finished with an acrylic shell that preserves its deep, rich colour even after years of punishment from the sun. We call the process ColourFast™. But with six colours and a 25-year fade resistance warranty, you can call it whatever you want.



Realistic woodgrain appearance

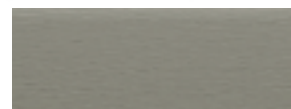
.046" thickness

Double-thick nail hem

Self-aligning lock design

3/4" profile height

ColourFast™
fade-resistance
technology



Charcoal



Brick



Cobalt



Evergreen



Pecan



Umber



Manor

- Using our ColorFast™ technology, non-reactive acrylic is fused to our premium vinyl compounds, providing fade resistance protection we warrant for 50 years.
- Molded from real cedar planks, TimberCrest Plus siding has a low-gloss finish for the classic look of freshly painted wood.
- TimberCrest Plus premium siding is .046" thick, which means outstanding impact-resistance.
- Our unique LineLock™ self-aligning locking system means a quick, easy, secure installation.
- TimberCrest Plus siding's 3/4" profile height and double-thick nail hem provide enhanced rigidity and windload resistance to 216 mph.
- Our VaporVent™ weep hole system helps prevent water molecules from becoming trapped behind the siding in cold or humid conditions.
- Compatible accessories are available to help you finish the job right.



DOUBLE 4



DOUBLE 4.5
DUTCHLAP

TimberCrest[®] Plus is available in 2 distinct profiles to add character to any home.

Printed colours may vary from actual siding color. Please make a final colour selection from siding samples.



Adirondack[™] Vinyl Log Siding Wall System

The rustic look of log siding without the maintenance.

The Adirondack™ Wall System captures the charm, distinctive beauty and warmth of real wood log siding.

What's more, it won't dent, crack, or split, and its 0.046" thickness and precisely contoured foam underlayment make it highly impact resistant. Unlike real wood, Adirondack resists mold, rot, mildew and insects. Its underlayment makes it more energy-efficient and absorbs sound. Adirondack Vinyl Log Siding is available in 4 natural low gloss woodgrains to add warmth and rustic charm to your home without ever having to scrape, paint or stain.



Vermont Maple



Cypress



Spice



River Rock



Precisely contoured underlayment for structural strength and energy efficiency

.046" thickness for excellent scratch and impact resistance

Panel locking system firmly locks panels together

Deeply textured woodgrain molded from real cedar logs

Printed colours may vary from actual siding color. Please make a final colour selection from siding samples.



TimberCrest® i/s

Insulated Vinyl Siding

Add “Energy Saving” to the long list of advantages with TimberCrest® i/s insulated vinyl siding.

The responsible solution for a low-maintenance exterior in colder climates.

TimberCrest® vinyl siding has always been a top performer—with a premium thickness of .046", a double nailing hem for outstanding rigidity and wind resistance of up to 216 mph, and LineLock™ interlocking system for a smooth, professional installation every time. Now, we’ve engineered in a premium, patented, contoured foam support and insulation system precisely configured to fit the profile of the siding panel. It provides durability and outstanding energy efficiency, and eliminates the void behind conventional hollow siding.

- Realistic woodgrain appearance
- Patented, contoured foam insulation & support
- .046" thickness
- Double-thick nail hem
- Self-aligning lock design
- 3/4" profile height
- Sunshield 2000™ UV technology

Reduce your energy bills and add comfort at the same time.

TimberCrest i/s adds three times the insulation value of standard fanfold at R-3, and can even help reduce your energy bills. TimberCrest i/s forms an overlapping barrier, and provides enhanced air-flow resistance and a solid defense against air infiltration through gaps and overlaps. Of course your energy savings will depend on a number of variables, but the increased comfort you and your family feel with the added insulation is real. This siding also offers superior sound insulation.



Take a strong stand against the weather.

The impact resistance for TimberCrest i/s is as much as 4 times that of most standard vinyl sidings. When you tap or knock on TimberCrest i/s, it sounds and feels just like wood. One additional benefit is the rigidity that comes from the bonding of vinyl and our contoured foam support. Instead of ‘telegraphing’ the uneven surfaces of your home, TimberCrest i/s goes up straight and stays true. Even when you apply force against the siding over a low spot, the siding returns to its original shape.

This siding system is energy tight, but still allows your walls to breathe.

Just how could a siding system be water-tight and breathable to release water vapor at the same time? It's designed to allow very little water in through the surfaces and seams, but allow plenty of moisture to escape in the form of water vapor. This allows your home to breathe ‘naturally’ and efficiently exchange moisture in any season.



TimberCrest i/s can save you energy and a whole lot more...

- Added insulation—up to R-3
- Increased air-flow resistance—fills in the voids behind the siding
- Superior impact resistance, added rigidity—stays straight against uneven wall surfaces
- Smoother appearance—get more of the look and feel of premium painted wood
- Better sound control
- Lifetime limited warranty on siding, 20 year warranty on the insulation



Printed colours may vary from actual siding colour. Please make a final colour selection from siding samples.



TimberCrest®

Premium Board and Batten

TimberCrest Premium Board and Batten looks like real wood up close and on the wall, too.

Our low-gloss, rough cedar texture creates a surface so real, it feels like it could give you splinters! And the low-gloss cedar texture is just the start. TimberCrest Premium Board and Batten siding is wider and more realistic than most competitive board and batten vinyl sidings. It's a full 7" exposure with a 5 ½" face and 1 ½" batten. TimberCrest Premium Board and Batten siding has a full ½" profile that provides dramatic shadows and the true authentic look of a true board and batten siding. And its .046" thickness provides outstanding durability and rigidity for a better installed appearance.

TimberCrest Premium vinyl siding's self-aligning locking system is designed to snap together with a positive connection, while allowing for flexibility in panel position during installation.



KP's Ultra-Vinyl UV technology compounds combat the harsh rays of the sun.

Low-gloss, rough cedar texture for a look of real wood.

Thickness of .046" for outstanding impact resistance and strength.

Full ½" profile for dramatic shadow lines.

Full 7" exposure with 5 ½" face and 1 ½" batten.

TimberCrest Premium Board and Batten with a virtual cedar wood grain is real-time low maintenance.

Enjoy the look of wood, without the worry. That wood siding you long for may be beautiful when it is new or freshly painted, but its beauty is short-lived. TimberCrest Premium Board and Batten looks like you spent the money for an expensive wood siding installation, and instead of scrapers and paintbrushes, you'll be using a garden hose from time to time to maintain its appearance. It's amazing peace of mind, backed by a lifetime limited warranty. Check our website for details and a copy of the warranty.



Using ColorFast™ Technology, non-reactive acrylic is fused to our premium vinyl compounds, providing fade resistant protection we warrant for 25 years.

Premium Colours



Cobblestone



White



Prairie Wheat

Plus — ColorFast™ Fade Resistant Technology



Cabot Red



Castlemore



Heritage Gray



Clay



Sage



Cabot Brown



Manor



Slate Blue



Sandstone



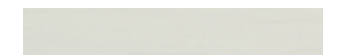
Slate



Cabot Blue



Khaki



Classic Linen

Manufactured with



Printed colours may vary from actual siding color. Please make a final colour selection from siding samples.

TimberCrest™ Perfection

Siding Shingles

Hand stained cedar beauty – that lasts.

The look of split cedar siding shingles without the maintenance.

Timbercrest™ Perfection Siding Shingles will not crack, rot or warp. The simple lines, historic style and natural beauty all enhance the exterior of your home. With minimal maintenance, this siding will provide years of beauty and elegance to your home's exterior.

Unique temperature lines molded directly on the panel ensuring fast and accurate installation.

Special structural ribs for added stability and extra protection against warping and distortion.

Easy Lock system enables installation under a window or at the end of a wall without tilting the panel.

Perimeter locks create a seamless look and hold the panels securely together.

- Unbeatable performance under the harshest weather conditions.
- Wind-load resistance of 220 mph.
- .090" thickness for added strength and rigidity.
- Variable width keyways designed to expand and contract without opening or buckling.
- Matching corner posts to complement any look.
- Advanced colour-through process provides superior fade resistance.
- Backed by a Limited Lifetime Warranty.

Complete the look.

The look of TimberCrest™ Perfection Shingles isn't fully complete without TimberCrest™ Perfection Corners.

TimberCrest™ Perfection Corners are available in a length of 28".

Matching or Contrasting corner posts to complete the look

NOTE: Only available for use with Perfection Single 7".

Timbercrest™ Perfection Rustic Collection

Add a touch of warmth to your home with our two-tone colours featured in our Timbercrest™ Perfection Rustic Collection

(AVAILABLE ONLY IN SINGLE 7")



Harbor Gray



Meadow



Cinnamon



Nutmeg



Espresso



SINGLE 7" — 6' PANEL



DOUBLE 7" — 4' PANEL



Brick



Umber



Cobalt



Evergreen



Spice



Pecan



Khaki



Charcoal



Slate



Sage



Clay



Almond



Cobblestone



Heritage Gray



Tan



Sandstone



Classic Linen



White



Terra Brown



Manor

All colours not available in all profiles. Please check availability.

Printed colours may vary from actual siding color. Please make a final colour selection from siding samples.



Cedar Creek™ Vinyl Siding

With a deep wood-grain, and impressive performance figures, you might think this was our top of the line.

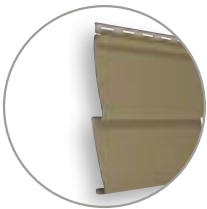
We won't tell your neighbors if your don't.

The most affordable option in our family of quality products, Cedar Creek™ vinyl siding is textured with a weathered wood grain that is built to withstand the elements. Manufactured with the same UV protection as our premium lines, and certified under the Vinyl Siding Institute certification program, Cedar Creek siding is available in four profiles and a range of colours for a beautiful, durable and affordable alternative to wood.

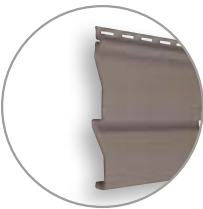


- Weathered woodgrain appearance
- .040" thickness
- LineLock™ panel locking system
- 1/2" lap profile
- Vapor Vent™ weep hole system
- High-grade vinyl compounds and UV inhibitors

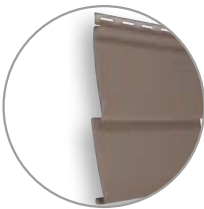
Cedar Creek™ Vinyl Siding is available in 4 profiles to give you more options.



DOUBLE 4



DOUBLE 4 DUTCHLAP



DOUBLE 5

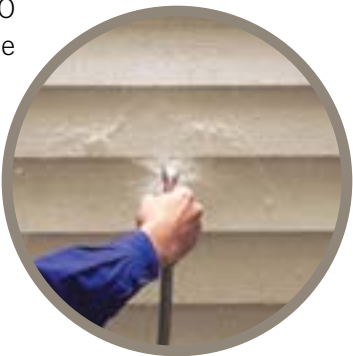


DOUBLE 5 DUTCHLAP

You'll want to take this new-found maintenance freedom to all corners of your home!

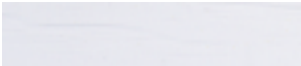
Cedar Creek vinyl siding becomes an even greater value when you couple it with ABTCO soffit and accessories. They are a great complement to the siding that makes your whole home exterior low-maintenance.

Vinyl soffits come in many designs and widths, with special venting perforations that help the necessary exchange of air and moisture. There are also special window and door trims that do a great job of protecting your house and looking just like wood trim at the same time. Most of these accessories and trims come in a broad variety of colours to match your siding exactly, or provide a nice architectural statement in a contrasting shade. Ask your Home Depot team member for information on all your options.



Why Cedar Creek™ Siding?

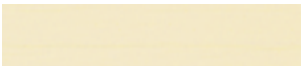
- Cedar Creek siding's .040" thickness exceeds ASTM D3679 minimum requirements.
- Our unique LineLock™ panel locking system means quick and easy installation.
- High-grade vinyl compounds and UV inhibitors mean outstanding resistance to the elements.
- Cedar Creek's 1/2" profile depth offers excellent rigidity and attractive shadow lines.
- Our VaporVent™ weep hole system helps channel condensed water vapor away from the siding.



White



Almond



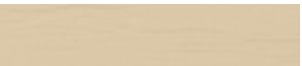
Prairie Wheat



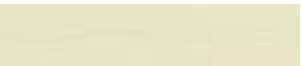
Heritage Gray



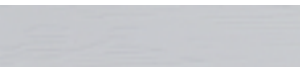
Classic Linen



Tan



Antique Ivory



Gray



Pine



Sand



Sage



Slate Blue



Sandstone



Khaki



Clay



Slate



Waterford® Vinyl Siding

If you could take softly weathered painted pine and stop the weathering process in its tracks, you would have Waterford vinyl siding.

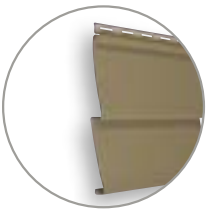
You can have texture and interest, and none of the maintenance associated with it.

Inspired by nature, Waterford® vinyl siding offers the realism of weathered pine—with almost none of the maintenance wood siding demands. Manufactured with the same UV protection as our premium lines, and certified under the Vinyl Siding Institute certification program, Waterford siding is artistically designed to re-create the unique look of weathered pine. Available in six profiles and a range of colours, Waterford vinyl siding is a high performance, low-maintenance alternative to wood.

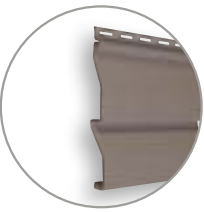


- Rolled/reinforced nail hem
- Realistic weathered pine texture
- .042" thickness
- LineLock™ panel locking system
- 1/2" lap profile
- Vapor Vent™ weep hole system
- UV inhibitors

Waterford™ Vinyl Siding is available in 6 profiles to give you more options.



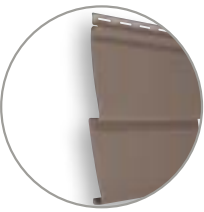
DOUBLE 4



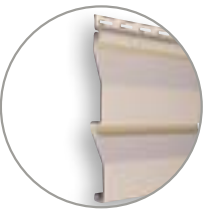
DOUBLE 4 DUTCHLAP



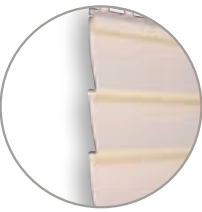
DOUBLE 4.5 DUTCHLAP
.040" THICKNESS



DOUBLE 5



DOUBLE 5 DUTCHLAP



TRIPLE 3

Don't stop with the siding, cover your whole house!

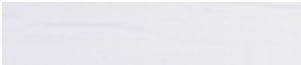
There are a lot of areas on your house that siding doesn't cover. We've taken that into consideration and designed a complete line of soffit and accessories to do the job. With ABTCO sidings you get matching and contrasting accessories to round out your low-maintenance remodeling project.



Vinyl soffits come in many designs and widths, with special venting perforations that help the necessary exchange of air and moisture. There are also special window and door trims that do a great job of protecting your house and looking just like wood trim at the same time. Most of these accessories and trims come in a broad variety of colours to match your siding exactly, or provide a nice architectural statement in a contrasting shade. Ask your Home Depot team member for information on all your options.

Why Waterford® Siding?

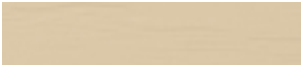
- Our unique LineLock™ panel locking system means quick and easy installation.
- High-grade vinyl compounds combined with advanced lab-engineered UV inhibitors mean outstanding resistance to the elements.
- Waterford siding's 1/2" panel silhouette adds significant rigidity during installation, and soothing shadow lines for enhanced beauty.
- Our VaporVent™ weep hole system helps channel condensed water vapor away from the siding.



White



Almond



Tan



Cobblestone



Sand



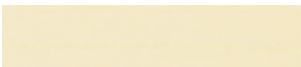
Sandstone



Pine



Khaki



Prairie Wheat



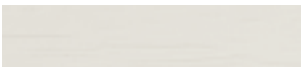
Antique Ivory



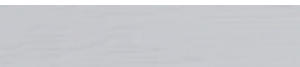
Sage



Clay



Classic Linen



Gray



Heritage Gray



Slate



Slate Blue



Vinyl Soffit

Add a low-maintenance finishing touch with these rigid vinyl soffit panels that combine the beauty of real painted wood with the strength and durability of our premium vinyl siding.

Our vinyl soffit gives your home a finished look—and virtually eliminates maintenance in those hard-to-reach areas, like under the eaves and over porches. We have many designs to choose from in woodgrain or smooth with a low-gloss finish. Vented panels feature a full-width perforated design that maximizes visual appeal while providing essential attic ventilation.



D5 Vertical
Solid Woodgrain

D5 Vented
Woodgrain

T4 Lanced
Brushed

T4 Solid
Brushed



Beaded Soffit

The charm of traditional wainscoting.

ABTCO Beaded Soffit beautifully combines the handcrafted look and feel of traditional wainscot-style soffit and its characteristic beaded wood with the practicality that comes with vinyl.

ABTCO offers 8" beaded soffit, available in both solid and vented. The vented beaded has been designed to provide ventilation where it may be required yet the perforations remain hidden to maintain the integrity of your home's exterior design.



Selection of designer colours is fully coordinated with KP sidings, accessories and trims.

Luxurious, finely textured matte finish never needs painting.

Invisible vents optimize airflow but the perforations are hidden.



8" Beaded
Solid Brushed

8" Beaded Brushed
Invisible Vent

I-Span™ Soffit

Strength that goes the extra mile.

For longer soffit expanses you need a soffit panel that can span the distance without sagging. You need I-Span™. With a 3/4" profile height, .046" wall thickness and I-beam construction, I-Span is designed for outstanding rigidity. A more rigid soffit panel provides a flatter, straighter appearance. In fact, I-Span resists sagging on over hangs up to 48".

- 3/4" profile height and .046" wall thickness.
- Innovative KP I-beam construction for enhanced rigidity to span distances of up to 48".
- Intellivent™ invisible venting provides necessary attic ventilation without calling attention to the soffit.



I-Span Soffit

I-Span Vented Soffit



Vinyl Skirting

For a clean and professional look, KP soffit panels also work exceptionally well as foundation surrounds and skirting for manufactured housing or for porch enclosures. Solid panels can be interspersed with vented panels to provide necessary air exchange beneath the building.

- Sanitary and easy to clean.
- Insect and vermin resistant.
- Easy to install.

We carry all the necessary trim pieces and accessories for these and any vinyl siding and soffit job. Our customer service personnel will be happy to assist you in product selection and ordering procedures. We have detailed installation instructions available also to help you and your contractor get a good start on a professional-looking, finished remodeling job.



16" Solid Skirting

16" Vented Skirting



Consider the effects of *colour* on your home.

We make choosing the colours for your home's exterior one of the most exciting parts of remodeling. It is a decision you will live with for many years to come, so it is worth taking the time to carefully consider your choices before making your final colour decision. You can enter into the process with confidence, as our vinyl siding colour palettes have been designed with shades that are destined to be attractive for the life of your home.

Keep in mind that colours often look different under different kinds of light, so you may want to take your favorite colour chips outdoors to get a better idea of how they look. And since we offer so many trims and accessories in contrasting colours, you may also want to compare your favorite siding and roofing colours to your trim colour choices. Most of all, don't fret. There are very few right or wrong decisions. Your choice can be a reflection of your own personal style, so let it shine.

Here's some food for thought as you ponder your colour choices.

Complement your home's architectural style.

The design can provide some direction for colour. For example, a traditional Cape Cod home may look best with a more subtle colour combination, while a Victorian-style home may inspire more dramatic colour selections.

Consider the effect of lighter shades.

Your home may appear larger with the use of lighter colours, and create an impression that it's closer to the front of the lot.

Don't be afraid of darker colours.

The darker colours like khaki and clay can make your home appear as though it is set farther back on the lot. Darker colours will also tend to make a home appear smaller—making a large home seem less imposing. Be careful, as it can also make a small home appear even smaller.

Accentuate important architectural details.

If your home has complex angles, using monochromatic colour schemes (different shades of the same colour) helps bring balance to the overall look.

Look for areas of visual interest.

Consider choosing trim in a colour that complements or subtly contrasts to add visual interest to your home's exterior. It can focus attention on areas like entryways or porches.



Redesign your house today
by using our on-line Home Designer 2.0



HOME Designer 2.0

Redesigning the exterior of your home has never been this easy.
Better options and endless combinations.



Use a sample home

Upload your own picture

Upload your own drawing

To try HomeDesigner2.0 visit abtco.com

MATRIX



1. WARRANTY COVERAGE

COVERAGE. This warranty applies to the original retail purchaser (“Purchaser”) of ABTCO vinyl siding, soffit and accessories (“Product(s)”) and to any owner (“Owner”) of a building on which the Product(s) is originally installed.

A. WARRANTY. We warrant that our Product(s), when applied in residential applications in the United States and Canada (including prefabricated residences located or to be located on a permanent building site) will remain free from manufacturing defects that cause peeling, flaking, rusting, blistering or rotting (“Nonconformities”). IF THE PRODUCT DOES NOT COMPLY WITH THIS LIMITED WARRANTY, OUR LIABILITY IS LIMITED TO THE REPAIR OR REPLACEMENT PROVISIONS SET FORTH IN SECTION 5.

B. Fade Resistance: We also warrant, to the original retail purchaser only, that our siding will resist excessive fading from normal and expected weathering and exposure to exterior elements for 50 years. For the purposes of this warranty, excessive fading is defined as a loss of color, after cleaning with a recommended solution, in excess of a Delta E of 3 color units as measured by an industry standard color measurement device.

C. HAIL DAMAGE. In the event of damage by hail, the Owner should report the damage to his or her homeowner’s insurance company to pursue coverage under a homeowner’s insurance policy. Proof of claim is required in the event that you are seeking coverage from ABTCO. To the extent Product(s) damaged by hail is not covered by the homeowner’s insurance policy, we warrant to the original retail Purchaser only that we will provide replacement material only for the damaged Product(s). The Owner shall be responsible for the payment of all installation, labor, freight costs and for the purchase of any additional siding intended to replace undamaged Product(s).

D. WARRANTY TERM. If the original Purchaser of the Product(s) is an individual, the warranty term will be that original Purchaser’s lifetime. If the original Purchaser of the Product(s) is not an individual, the warranty term will be deemed to be 50 years. The warranty period for any Product(s) repaired or replaced under this Warranty shall be equal to the remaining warranty period applicable to any Product(s) originally installed on the residence.

2. WARRANTY TRANSFER

This warranty, except for the hail damage warranty in Section 1C and the Fade Resistance in Section 1B, may be transferred to the subsequent owner of the residence where the Product(s) has been installed if we are notified of change in ownership within ninety (90) days of the change. Failure to notify us of change in ownership shall relieve us of all further obligations hereunder. Upon change in ownership of the residence where the products were originally installed and our receipt of timely notice of change of ownership, the warranty period shall be fixed at fifty (50) years from the date of original installation.

3. EXCLUSIONS FROM WARRANTY COVERAGE THIS EXPRESS WARRANTY PROVIDES A REMEDY ONLY FOR THE NONCONFORMITIES REPORTED AND CONFIRMED IN ACCORDANCE WITH SECTION 7. DISCOLORATION CAUSED BY AIR POLLUTION OR EXPOSURE TO HARMFUL CHEMICALS IS NOT COVERED BY THIS WARRANTY. DISCOLORATION CAUSED BY EXPOSURE TO THE ELEMENTS OR NORMAL WEATHERING. IN ADDITION, THIS WARRANTY DOES NOT PROVIDE A REMEDY FOR DAMAGE TO THE PRODUCT(S) CAUSED BY:

ABTCO Warranty Information

A. (1) MISUSE OR IMPROPER HANDLING, INSTALLATION OR MAINTENANCE; (2) ALTERATIONS TO THE STRUCTURE AFTER THE ORIGINAL INSTALLATION OF THE PRODUCT(S); (3) ACTS OF GOD, SUCH AS LIGHTNING, WIND STORM, HURRICANE, TORNADO, EARTHQUAKE, FLOOD OR OTHER SIMILAR SEVERE WEATHER OR NATURAL PHENOMENA; (4) DESIGN, APPLICATION OR CONSTRUCTION OF THE STRUCTURE ON WHICH THE PRODUCT(S) ARE INSTALLED; OR (5) TRANSPORT, STORAGE OR HANDLING OF THE PRODUCT(S) PRIOR TO INSTALLATION.

B. PRODUCT(S) NOT INSTALLED IN COMPLIANCE WITH ALL APPLICABLE BUILDING CODES AND/OR NOT INSTALLED AND MAINTAINED ACCORDING TO THE THEN CURRENT VINYL SIDING INSTITUTE INSTALLATION GUIDE.

C. INSTALLATION WORKMANSHIP.

D. ANY PRODUCT(S) WHICH IS PAINTED.

E. MISINSTALLATION OF ANOTHER PRODUCT ON THE SAME WALL.

F. USE OF ACCESSORIES WHICH DO NOT PROPERLY RECEIVE AND/OR SECURE THE PRODUCT(S) TO THE WALL.

G. IMPACT OF FOREIGN OBJECTS.

H. DAMAGE RESULTING FROM FAILURE TO COMPLY WITH OUR INSPECTION AND MAINTENANCE REQUIREMENTS AND INSTALLATION INSTRUCTIONS.

I. FAILURE OF OR DAMAGE TO THE WALL ON WHICH THE PRODUCT(S) WERE INSTALLED CAUSED BY MOVEMENT, DISTORTION, CRACKING OR SETTLING OF THE WALL OR THE BUILDING FOUNDATION.

J. WARPING OR DISTORTION FROM ANY EXCESSIVE HEAT OR ANY REFLECTIVE SOURCE.

4. EXCLUSION OF IMPLIED WARRANTIES; NO OTHER EXPRESS WARRANTIES THIS WARRANTY IS THE ONLY WARRANTY APPLICABLE TO THIS PRODUCT(S) AND EXCLUDES ALL OTHER EXPRESS OR IMPLIED WARRANTIES, INCLUDING ANY IMPLIED WARRANTY OF MERCHANTABILITY OR FITNESS FOR A PARTICULAR PURPOSE, OR ANY WARRANTIES OTHERWISE ARISING FROM THE COURSE OF DEALING OR USAGE OF TRADE OR ADVERTISING, EXCEPT WHERE SUCH WARRANTIES ARISE UNDER APPLICABLE CONSUMER PRODUCT WARRANTY LAWS AND CANNOT LAWFULLY BE DISCLAIMED, IN WHICH EVENT SUCH WARRANTIES ARE LIMITED TO SUCH SHORTER PERIOD AS PERMITTED OR REQUIRED UNDER APPLICABLE LAW. Some states do not allow limitations on how long an implied warranty lasts, so the above limitations may not apply to you. NO OTHER EXPRESS WARRANTY HAS BEEN MADE OR WILL BE MADE ON OUR BEHALF WITH RESPECT TO THIS PRODUCT(S).

5. REMEDIES

THIS SECTION PROVIDES FOR THE SOLE REMEDY AVAILABLE TO THE PURCHASER OR OWNER FOR ANY NONCONFORMITY IN THE PRODUCT(S). In the event of any Nonconformity covered by this or any implied warranty not disclaimed in Section 4, we will, at our sole option, either repair, restore or replace defective or damaged Product(s), including labor and ABTCO Vinyl siding and ABTCO Vinyl accessory materials necessary to perform the work. A labor allowance are at the sole discretion of ABTCO and will be paid on rates established by ABTCO. WE MAY DISCONTINUE, MODIFY OR



ABTCO® a KP Brand has got you covered.



KP Building Products vinyl siding is manufactured to the highest quality standards and designed to last for decades. Your siding is very low maintenance and typically only requires an occasional washing with soapy water. Now you can relax and enjoy the freedom of never having to paint your siding again.

KP Building Products vinyl siding is warranted to be free from manufacturing defects that result in peeling, flaking, rusting, blistering or rotting during the lifetime of the original purchaser, subject to the terms and conditions set forth in detail within the KP Building Products siding warranty.

All siding products produced by KP Building Products conform to ICC report ESR1517

KP | BUILDING
PRODUCTS

2700 High Point Dr, Milton, ON L9T 5G9
1-800-265-9829 • www.abtco.com

TimberCrest and all other company names and product names are trademarks or registered trademarks of KP Building Products.
©2018 KP Building Products. All rights reserved.

Abtco-CDN-2018

